

Panasonic

Operating Instructions AC/Rechargeable Professional Hair Clipper

Model No. ER1512



Before operating this unit, please read these instructions completely and save them for future use.

Warning

- This appliance can be used by children aged from 8 years and above and persons with reduced physical, sensory or mental capabilities or lack of experience and knowledge if they have been given supervision or instruction concerning use of the appliance in a safe way and understand the hazards involved. Children shall not play with the appliance. Cleaning and user maintenance shall not be made by children without supervision.
- The power cord cannot be replaced. If it is damaged, the AC adaptor should be discarded.
- Do not use any power cord or AC adaptor other than the AC adaptor (RE9-57).
- Keep the appliance dry.


Thank you for choosing a Panasonic Hair Clipper. Please read all instructions before use.

Important

► Before use

This clipper is designed for professional use to trim hair and beards. Charge it for 8 hours before use for the first time in order to activate the built-in rechargeable batteries. It can be operated on either an AC adaptor or rechargeable batteries. Read all instructions carefully before use.

► Charging the clipper

- Avoid charging the batteries at temperatures below 0 °C or above 35 °C.
- Avoid charging the batteries in direct sunlight or near a radiating heat source.
- The charge status () lamp may blink at an early stage when it is used for the first time or if it has not been used for 6 or more months even if it is fully charged. This is not a malfunction.
- Even though the clipper may not be used for an extended period, charge every 6 months to preserve battery life.

► Using the clipper

- The clipper may become warm during operation and/or charging. This is normal.
- Check that the blades and the attachments are not damaged before use. Replace them if they are damaged.
- You should not allow permanent wave lotion, hair restorer or hair spray to come into contact with the main body or the blades. Doing so may result in cracking, discoloring or corrosion.
- You should not drop the clipper on the floor.
- Before each use, apply oil at the places marked with arrows. (See page 7.)
- You should not knock the blades and the attachments against hard objects.

- You should not trim the hair of a pet.

► Cleaning the clipper

- Clean the housing using only a cloth slightly dampened with water or a mild soap solution.
- Never use a caustic solution.
- Never submerge the clipper in water.
- Clean the power plug regularly to remove any dust or dirt.

► Storing the clipper

- Never tamper with moving parts.
- Avoid grabbing the clipper by the power cord, as it may become detached, causing damage or injury.
- If the clipper is not working properly, have it inspected at an authorized service center.

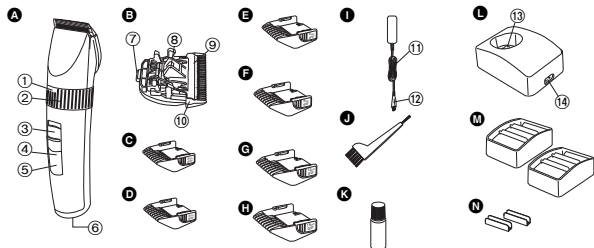
Specifications

Power source: See the name plate on the product.
(Automatic voltage conversion)

Motor voltage: 2.4 V---

Charging time: Approx. 1 hour

Parts identification

**A** Main body

- ① Trimming height indicator
- ② Dial (Height adjustment control)
- ③ 0-CHARGE/1 switch
- ④ Battery capacity lamp
- ⑤ Charge status (➔) lamp
- ⑥ Appliance socket

B Blade

- ⑦ Mounting hook
- ⑧ Cleaning lever
- ⑨ Moving blade
- ⑩ Stationary blade

C 3 mm comb attachment

- D** 4 mm comb attachment
- E** 6 mm comb attachment
- F** 9 mm comb attachment
- G** 12 mm comb attachment
- H** 15 mm comb attachment
- I** AC adaptor (RE9-57)

⑪ Power cord

⑫ Appliance plug

J Cleaning brush**K** Oil**L** Charging stand

⑬ Charging plug

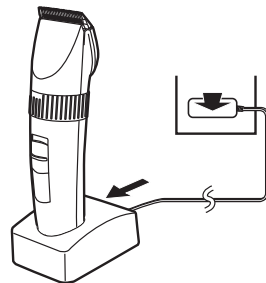
⑭ Socket

M Comb attachment shelves (x2)**N** Connectors (x2)

Charge

Charging the hair clipper

- 1** Connect the power cord to the charging stand.
- 2** Slide the 0-CHARGE/1 switch to "0-CHARGE".
- 3** Place the clipper on the charging stand and plug in the AC adaptor into an outlet.

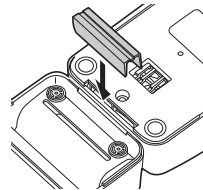


- Charge status (➔) lamp glows and charging starts.
- Charging is completed when Charge status (➔) lamp blinks. (Max. 1 hour later)
- 1 full charge will provide approximately 70 minutes of continuous operation.

Connecting the comb attachment shelf to the charging stand

Determine the connection position for the charging stand and comb attachment shelf. Firmly insert the connector into the slot at the bottom of the charging stand.

- If the unit wobbles, then further push in the connector since it has not been firmly inserted.



About the LED display

While charging



- ➡ glows.
- "HIGH", "MID" or "LOW" blinks.

After charging is completed



- ➡ blinks once every second.

10 minutes after charging is completed



- ➡ blinks once every 2 seconds.
- "HIGH/MID/LOW" go out.

While using

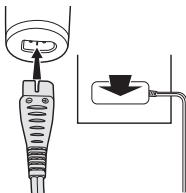


- "HIGH" blinks - The battery capacity is enough.
- "MID" blinks - The battery capacity is approx. 60% or less.
- "LOW" blinks - The battery capacity is approx. 10% or less.

- Charge the clipper when "LOW" starts to blink.

▶ Charging without the charging stand

1. Slide the 0-CHARGE/1 switch to "0-CHARGE", and insert the appliance plug into the clipper.
2. Plug in the AC adaptor into an outlet.



▶ AC operation

If you connect the AC adaptor to the clipper in the same way as for charging, and turn on the power, you can use it even if the battery capacity is low.

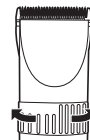
- If the clipper does not operate, charge the clipper for approximately 1 minute.
- Be careful not to discharge the battery completely with the power left turned on. It results in shortening the battery life.

Cut

Using the hair clipper

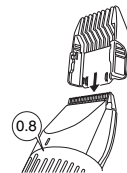
We recommend using the clipper in an ambient temperature range of 0 - 35 °C. If used outside this range, the appliance may stop operating.

Turn the dial clockwise or counterclockwise to adjust the moving blade back and forth to get the desired height. Adjustable in 5 stages from 0.8 mm to 2.0 mm in 0.3 mm steps without attachments. Actual hair length will be a little longer than the set length.



▶ Using the comb attachments

1. Select the trimming heights indicated on the insides and sides of the attachments.
2. Set the dial to "0.8" and then mount the attachment to the clipper as illustrated.



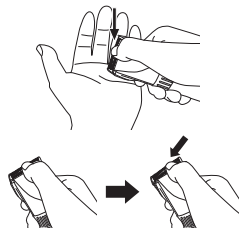
Removing the attachment from the clipper

Remove the attachment as illustrated.

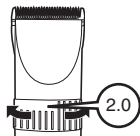
**Care****Blade maintenance****Removing and mounting the blade****► Removing the blade**

1. Hold the clipper with the switch facing upward and push the blade with your thumb while catching the blade in your other hand.

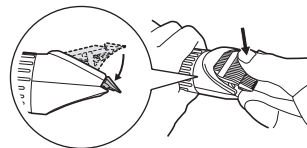
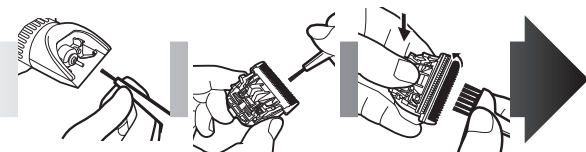
- Be sure to turn off the power before you remove the blade.

**► Mounting the blade**

1. Set the dial to "2.0".



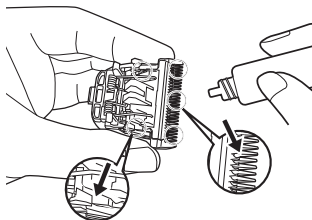
2. Fit the mounting hook into the blade mounting on the clipper and push in until it clicks.

**Cleaning the blade**

1. Brush off any hairs from the clipper and brush off the hairs from around the blade.
2. Remove the blade and brush off the hairs from the blade edge.
3. Brush the hairs out from between the stationary blade and the moving blade while pressing down on the cleaning lever to raise the moving blade.

Lubrication

1. Apply a few drops of the oil to the space between the stationary blade and moving blade.
 - Apply the oil to the clipper before and after each use.
2. Set the dial to “2.0” and then remount the blade on the clipper.



► Replacement parts

Replacement part is available at your dealer or Service Center.

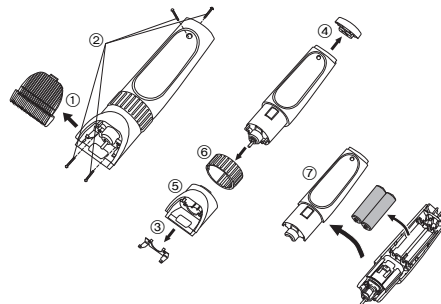
Replacement parts for ER1512	Blade	WER9900
	Oil	WES003

Removing the built-in rechargeable batteries

Remove the built-in rechargeable batteries before disposing of the clipper. Please make sure that the batteries are disposed of at an officially designated location if there is one. Do not dismantle or replace the batteries so that you can use the clipper again. This could cause fire or an electric shock.

Please contact an authorised service center.

- Disconnect the power cord from the clipper when removing the batteries.
- Perform steps ① to ⑦ and lift the batteries, and then remove them.



For environmental protection and recycling of materials

This clipper contains Nickel-Metal Hydride batteries.

Please make sure that the batteries are disposed of at an officially assigned location, if there is one in your country.

Please read “Information for Users on Collection and Disposal of Old Equipment and used Batteries” on page 113.

Panasonic Corporation

<http://www.panasonic.com>

© Panasonic Corporation 2011-2016